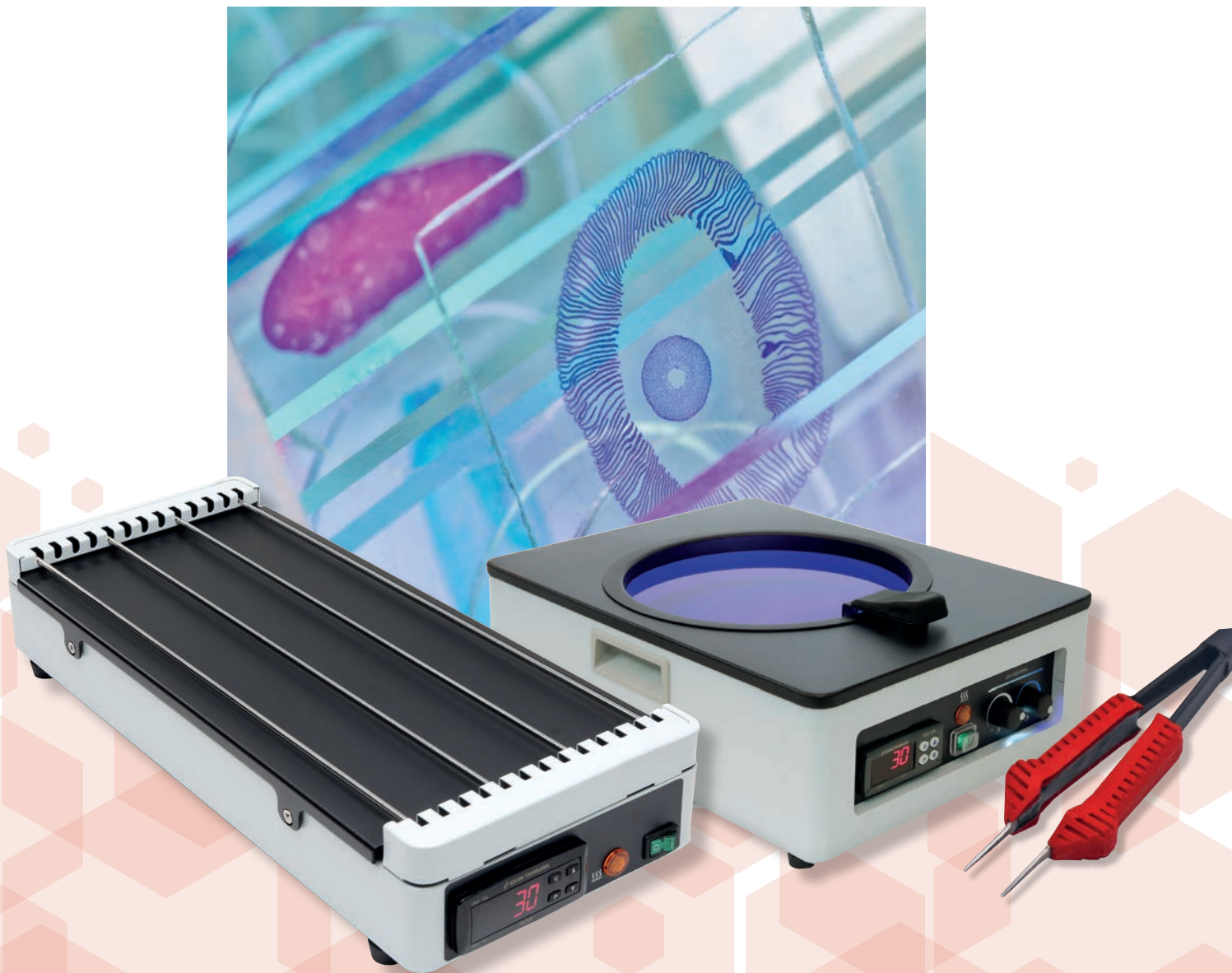


CellTec Laboratory Equipment

PRODUCTS TO ACHIEVE THE BEST RESULTS





CellTec Laboratory Equipment

Manufactured in the UK, CellPath's innovative range of CellTec laboratory equipment focus on minimal footprint and providing maximum usability. This makes them ideal for all laboratories, especially those driven by efficient workflow practices.

All CellTec equipment is highly accurate, reliable and easy to use. They are specifically designed to avoid potential specimen damage, and where appropriate, have an anti-microbial coating to inhibit the growth of bacteria and viruses.

The majority of CellTec equipment is dual voltage with a range of plugs to allow use in multiple countries.



More information

Contact our Customer Care Team
for further information on +44 (0)1686 611333



DISCLAIMER: CellPath Ltd assumes no responsibility or liability for any errors or omissions in the content of this publication. The information contained in this publication is provided on an "as is" basis with no guarantees of completeness, accuracy, usefulness or timeliness.

CONTENT

- 3 **Block Trimmer+**
- 4 **TruSlice Specimen Cut Up System**
- 8 **CellCeps+ Heated Forceps and Tampers**
- 10 **Wax Dispensers**
- 12 **Water Baths**
- 16 **Slide Drying Workstation**
- 17 **Slide Drying Hotplates**
- 19 **Section Dryers and Ovens**
- 22 **Coldplates**
- 24 **FumeBuddy Filtration System**
- 25 **Digital Imaging System**

Block Trimmer+

CellPath's Block Trimmer+ efficiently removes excess paraffin from the outside of a tissue cassette following embedding. The edges and writing surface of the tissue cassette are de-waxed effortlessly by pressing the paraffin block across the patterned heated work surface.

The Block Trimmer+ allows users to prepare tissue blocks with no risk of damage to the printed text or barcode on the tissue cassette. An extra-large heated work surface allows multiple blocks to be pressed across the work surface at one time, significantly improving laboratory workflows. Melted paraffin wax is then collected in a disposable collection pot.

Dimensions: 202mm x 152mm x 183.5mm (D x W x H)

Item Code	Description	Quantity
JAZ-0200-00A	Block Trimmer+	1

RECOMMENDED
BY CELLPATH

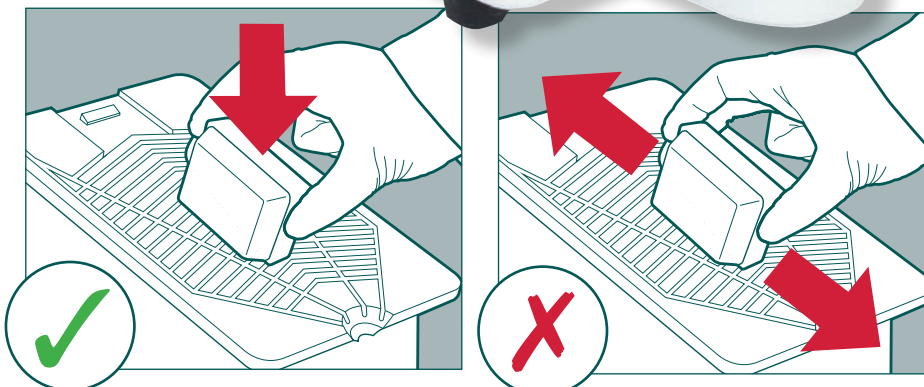
ExacTrim Locator
- removes wax
from cassette
face

KEY BENEFITS

- 1 Revised design hotplate - trimmed wax is quickly wicked away
- 2 ExacTrim Locator - removes wax from the writing surface of a standard cassette locked in a Supa Mega Mothership cassette. It can also be used with conventional blocks as a fine detail trimmer (See image below)
- 3 Large heated work surface - allows users to de-wax multiple blocks
- 4 Small footprint
- 5 Ultra fast heating system for rapid warm up
- 6 Variable digital temperature control with a memory function for desired temperature at start-up
- 7 Neutral slope to satisfy both left and right handed users
- 8 Easy access waste wax collection system
- 9 Incorporated miniature circuit breakers for added safety and eliminating the need for replacement fuses



See video on
our website



TruSlice Specimen Cut Up System

Reduce processing times through accurate and consistent slices

The TruSlice, developed in partnership with Guy's and St Thomas' Hospital utilises colour coded cut inserts to vary the slice thickness (2, 3, 4 and 5mm), which can be easily changed to adjust to the desired thickness of specimen slice.

During the cut up, clear Perspex immobilisation plates ensure that users are able to control the pressure applied to a specimen, preventing the possibility of deformation during slicing.

Manufactured from 316 stainless steel, the TruSlice Cut Up System has been specifically designed to allow for quick and easy cleaning.

In accordance with the ISO: 15189: 2012 standard, an optional calibration set is available, which can be used by the end user to check the accuracy of their TruSlice instrument. This provides complete assurance to the user as to the accuracy of the sliced tissue specimen.



MacroKnife being used with the TruSlice.

Also available with the TruSlice system is the SureCut Dissection Board. This allows the user to integrate the instrument into a cutting board, saving valuable worktop space.

Dimensions: 120mm x 260mm x 110mm

KEY BENEFITS

- 1 Enables accurate and consistent slicing of tissue specimens
- 2 Suitable for slicing both fresh and fixed tissue
- 3 Ensures consistent high quality processing and reduced processing times
- 4 Small footprint takes up minimal space at the cut up bench
- 5 50mm x 50mm immobilisation plate facilitates grossing of soft tissue specimens
- 6 Robust instrument manufactured from 316 stainless steel
- 7 Easy to clean
- 8 Optional UKAS calibration set ensures confidence in the accuracy of the cut up system
- 9 Optional SureCut dissection board specifically developed to accommodate 'TruSlice' system includes a UKAS calibrated ruler

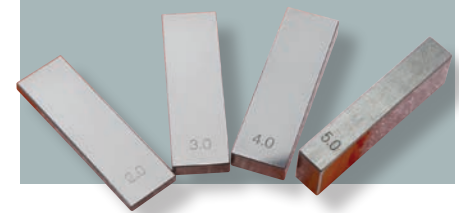
TruSlice Specimen Cut Up System

Item Code	Description	Quantity
CBA-0100-00A	TruSlice Specimen Cut Up System	1
	TruSlice 2mm Insert – Red	1
	TruSlice 3mm Insert – Yellow	1
	TruSlice 4mm Insert – Green	1
	TruSlice 5mm Insert – Blue	1
	TruSlice Small Cutting Insert	1
	TruSlice 50mm Immobilisation Plate	1
	MacroKnife 10 inch (250mm) Lung Knife	1
	TruSlice Quick Start Instructions for Use	1
	3mm Allen Key	1
	Waterproof Case 20.5 inch with Foam	1
	Supa Mega Mothership Cassette Sample Pack	1
	Supa Mega Slim Cassette Sample Pack	1

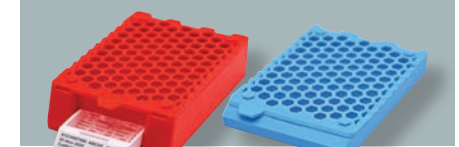
TruSlice Inserts



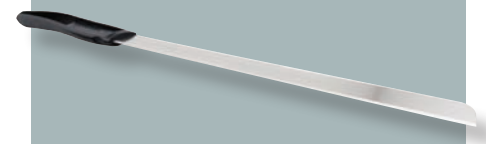
Calibration Set



Supa Mega Mothership and Supa Mega Slim Cassettes



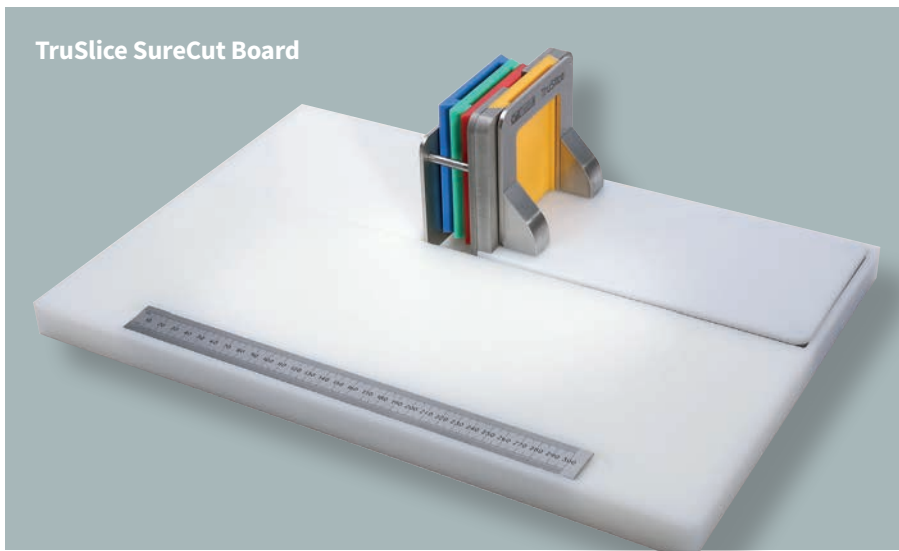
MacroKnife 10 inch (250mm) Lung Knife



Suggested Accessories for TruSlice

Item Code	Description	Quantity
CBA-0100-00B	TruSlice SureCut Board - White	1
QAA-0100-00A	Steel Rule, Rigid, 300mm / 12 inch - UKAS Calibrated	1
CBA-0300-00C	2, 3, 4, 5mm Calibration Set - UKAS Certified	1
CBA-0100-25K	TruSlice Mixed Inserts (Red, Yellow, Green and Blue)	1
CBA-0100-25G	TruSlice 2mm Insert (Red)	1
CBA-0100-25H	TruSlice 3mm Insert (Yellow)	1
CBA-0100-25I	TruSlice 4mm Insert (Green)	1
CBA-0100-25J	TruSlice 5mm Insert (Blue)	1
CBA-0300-00A	TruSlice 50mm Immobilisation Plate	1
CBA-0200-00B	TruSlice 75mm Immobilisation Plate	1
CBA-0100-05D	TruSlice Small Cutting Insert	1
CBA-0100-05E	TruSlice Large Cutting Insert	1
CAA-1001-01A	10 Pack MacroKnife 10 inch (250mm) Lung Knife	1

TruSlice SureCut Board



Further Reading

1. Development of New and Accurate Measurement Devices (TruSlice) for use in Histological Dissection: An Attempt to Improve Specimen Dissection Precision. *Orchard G.E, Shams M. et al. Br J Biomed Sci 2015; 72 (3): 140-145*
2. HER2 Testing in the UK: Further update to Recommendations. *R.A. Walker et al. J. Clin. Pathol. 2008; 61: 818-824*
3. American Society of Clinical Oncology/ College of American Pathologists Guideline Recommendations for Immunohistochemical Testing of Estrogen and Progesterone Receptors in Breast Cancer. *Hammond et al. Arch Pathol Lab Med-2010*
4. ASCO/CAP Guideline Recommendations for Human Epidermal Growth Factor Receptor 2 Testing in Breast Cancer. *A.C. Wolff et al. Arch Pathol Lab Med - Vol 131, January 2007*

TruSlice Digital Specimen Cut Up System



Quick and easy to reconfigure slice thickness

Also manufactured from 316 stainless steel, the TruSlice Digital Cut Up System is designed for robustness and minimal use of bench space.

With all the benefits of the TruSlice system, TruSlice Digital utilises an adjustable moving knife guide rather than colour coded inserts. Incorporating a digital display, users can quickly vary slice thickness from 1mm to 10mm, thus offering greater flexibility to the user.



MANUFACTURED FROM 316 STAINLESS STEEL

Specifications	
Item Code:	CBA-0200-00A
Dimensions:	310mm x 120mm x 195mm (d x w x h)
Cutting Face:	101mm x 87.5mm (w x h)
Weight:	10kg
Material:	316 Stainless Steel with HDPE Plastic Inserts



KEY BENEFITS

- 1 Enables accurate and consistent slicing of tissue specimens
- 2 Reduces the time taken to gross specimens
- 3 Suitable for slicing both fresh and fixed tissue
- 4 Ensures consistent high quality processing and reduced processing times
- 5 Small footprint takes up minimal bench space
- 6 Quick and easy to re-configure slice thickness
- 7 Disassembly means the instrument is easy to clean
- 8 50mm and 75mm clear perspex immobilisation plates facilitate grossing of soft tissue specimens
- 9 Optional UKAS calibration set ensures confidence in the accuracy of the cut up system
- 10 Adjustable moving knife guide with digital display, can be set for any slice thickness from 1 to 10mm

TruSlice Digital Specimen Cut Up System

Item Code	Description	Quantity
CBA-0200-00A	TruSlice Digital Specimen Cut up System	1
	TruSlice 50mm Immobilisation Plate	1
	TruSlice 75mm Immobilisation Plate	1
	TruSlice Digital – Cutting Insert	1
	MacroKnife 10 inch (250mm) Lung Knife	1
	TruSlice Digital Quick Start Instructions for Use	1
	3mm Allen Key	1
	4mm Allen Key	1
	Waterproof Case 20½ inch with Foam	1
	Supa Mega Mothership Cassette Sample Pack	1
	Supa Mega Slim Cassette Sample Pack	1

Suggested Accessories

Item Code	Description	Quantity
CBA-0300-00C	2, 3, 4, 5mm Calibration Set - UKAS Certified	1
CAA-1001-01A	10 Pack MacroKnife 10 inch (250mm) Lung Knife	1

‘TruSlice was very quick to set-up and integrate into our laboratory. As the device ensures ease of cutting consistency, it has made it possible for us to provide greater standardisation of techniques such as tissue freezing and formalin fixation, and microwave tissue processing – this is only possible due to the accuracy of the device and resultant consistent slice thicknesses.

I wouldn’t hesitate to recommend the TruSlice Cut Up System to other laboratories.’

Dr G M Reynolds PhD CSci FIBMS
Cellular Pathology Lead & Hon. Senior Research Fellow
University of Birmingham



Formalin umbrella to protect digital display.



UKAS certified calibration set.

CellCeps+ Heated Forceps

The CellCeps+ heated forceps and tampers are electrically heated instruments designed to assist in the orientation and positioning of histological specimens during embedding in paraffin wax. They incorporate safe, low-voltage heating elements which maintain an optimum temperature for manipulation of specimens in histological wax.

The CellCeps+ range contains three sizes of heated tamper which fit directly onto the CellCeps+ control unit. The largest size of tamper is designed to help specimen embedding for the large Supa Mega sized specimens.

CellCeps+ Heated Forceps Systems

Item Code	Description	Quantity
GZG-0100-00A	CellCeps+ Heated Forceps System – Serrated Forceps (1 x 1mm & 1 x 2mm Serrated Forceps, Control Unit & Power Supply)	1
GZI-0100-00A	CellCeps+ Heated Forceps System – Smooth Forceps (1 x 1mm & 1 x 2mm Smooth Forceps, Control Unit & Power Supply)	1

CellCeps+ Heated Forceps Replacement Items

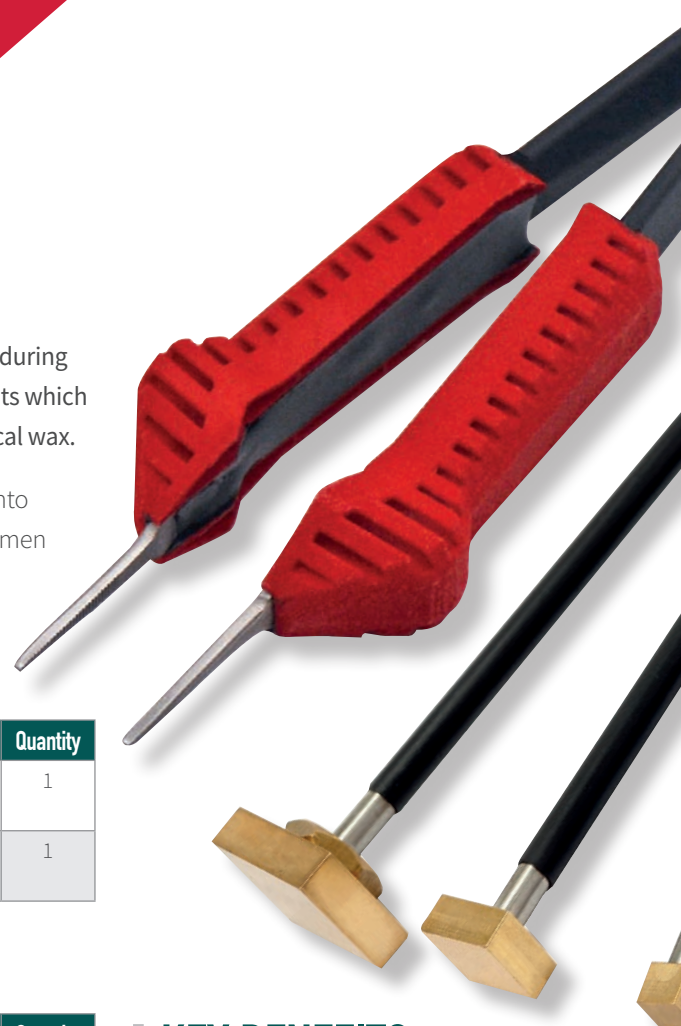
Item Code	Description	Quantity
GZF-0100-00A	Heated Forceps Serrated 1mm (Red)	1
GZF-0200-00A	Heated Forceps Serrated 2mm (Yellow)	1
GZF-0300-00A	Heated Forceps Serrated 4mm (Blue)	1
GZH-0100-00A	Heated Forceps Smooth 1mm (Red)	1
GZH-0200-00A	Heated Forceps Smooth 2mm (Yellow)	1
GZH-0300-00A	Heated Forceps Smooth 4mm (Blue)	1

CellCeps+ LED Heated Forceps

Item Code	Description	Quantity
GZF-0100-00L	CellCeps+ LED Heated Forceps 1mm Serrated (Red)	1
GZF-0200-00L	CellCeps+ LED Heated Forceps 2mm Serrated (Yellow)	1
GZF-0300-00L	CellCeps+ LED Heated Forceps 4mm Serrated (Blue)	1
GZH-0100-00L	CellCeps+ LED Heated Forceps 1mm Smooth (Red)	1
GZH-0200-00L	CellCeps+ LED Heated Forceps 2mm Smooth (Yellow)	1
GZH-0300-00L	CellCeps+ LED Heated Forceps 4mm Smooth (Blue)	1

CellCeps+ Curved Heated Forceps

Item Code	Description	Quantity
GZF-0100-00C	CellCeps+ Curved Heated Forceps 1mm Serrated (Red)	1
GZF-0200-00C	CellCeps+ Curved Heated Forceps 2mm Serrated (Yellow)	1
GZF-0300-00C	CellCeps+ Curved Heated Forceps 4mm Serrated (Blue)	1
GZH-0100-00C	CellCeps+ Curved Heated Forceps 1mm Smooth (Red)	1
GZH-0200-00C	CellCeps+ Curved Heated Forceps 2mm Smooth (Yellow)	1
GZH-0300-00C	CellCeps+ Curved Heated Forceps 4mm Smooth (Blue)	1



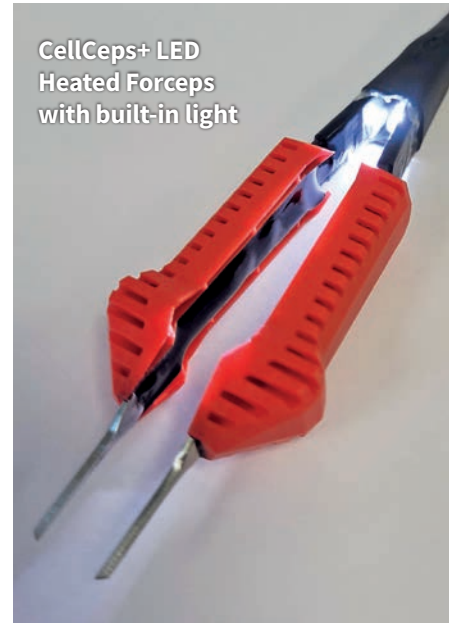
KEY BENEFITS

- 1 Finger grip remains cool to touch when in use, and increases comfort during longer embedding sessions
- 2 Forcep tips and tampers operate at a temperature between 63°C-70°C, preventing tissue from sticking to the tips and ensuring specimen safety
- 3 Forceps available with 1, 2 and 4mm tip widths, giving users a greater flexibility
- 4 Both smooth or serrated jaw forceps available - smooth forceps are ideal for handling fragile tissue specimens which are easily marked, whilst serrated jaws provide a strong grip for manipulating specimens, base moulds and cassettes
- 5 Cable armour at junction of forceps and power cable prevents fracture and improves reliability of the product
- 6 Bayonet connection prevents disconnection during use
- 7 3 sizes of heated tampers with cool to touch grips. The largest tamper enables users to flatten large specimens during embedding, ideal for users of CellPath's Supa Mega range of cassettes

CellCeps+ Heated Forceps Accessories

Item Code	Description	Quantity
GZJ-0100-00A	Heated Tamper 8 x 8mm (Red)	1
GZJ-0200-00A	Heated Tamper 16 x 16mm (Yellow)	1
GZJ-0300-00A	Heated Tamper 28 x 25mm (Blue)	1
GZK-0100-00A	CellCeps+ Control Unit	1
GZK-0200-00B	CellCeps+ Power Supply (UK, EU, US, AUS & NZ Adapters)	1
GZK-0400-00A	CellCeps+ Heated Forceps / Tamper Extension Cable (0.5m)	1
GZK-0600-00A	Male BNC Bayonet to Male 3.5mm Jack Converter Cable - Green <i>Info: Enables CellCeps+ forceps and tampers with bayonet connection to be used on older generation control units utilising 3.5mm jack connectors.</i>	1
GZK-0500-00A	Female 3.5mm Jack to Female BNC Bayonet Converter - White <i>Info: Enables older generation CellCeps / Speciceps forceps with 3.5mm jack connectors to be utilised on latest CellCeps+ Control Unit utilising bayonet connectors.</i>	1
GZK-0300-00A	Forceps Stand (For 2x Forceps / 2x Tampers)	1

CellCeps+ LED Heated Forceps with built-in light



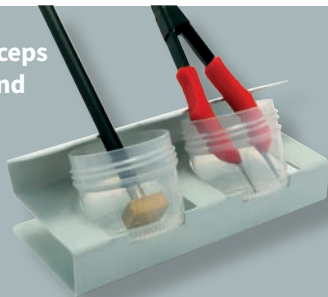
Male to Male Jack Converter



Female to Female Jack Converter



Forceps Stand



Power Supply



Extension Cable



CellCeps+ Control Unit



Slimline Wax Dispenser

Designed for on-demand delivery of molten wax

The novel design of the Slimline Wax Dispenser ensures a minimal requirement for bench space, whilst still maintaining a large 7.5L capacity tank for melting up to 6kg of pelletized wax at a time.

A digital temperature control provides a highly accurate temperature setting of the molten wax, and is coupled with an ultra-fast heating system for rapid melting of pelletized wax, with melted wax available for dispensing after only 30 minutes.

Delivery of molten wax is via a high positioned non-drip lever tap, which can be locked in an open position for quick delivery of the wax into various sized containers. The dispensing tap is heated via a dedicated heating system which prevents blockages caused by solidified wax.

Dimensions: 420.5mm x 181mm x 435.5mm (D x W x H)

Item Code	Description	Quantity
JAU-0100-00A	Slimline Wax Dispenser 110-230V A.C. 50-60hz	1



KEY BENEFITS

- 1 Space saving slimline design to minimise footprint
- 2 Ultra-fast heating system reduces waiting time before molten wax is available
- 3 7.5 litre capacity holds up to 6kg of pelletised wax
- 4 Digital controls ensure an accurate temperature and no energy wastage maintaining wax at a higher than required temperature
- 5 Heated tap prevents blockages
- 6 Non drip 'three position' lever tap includes 'dispense when pressed' giving users full control over wax dispensation, 'locked open' for the rapid delivery of large quantities of molten wax, and 'locked closed' to prevent accidental dispensing of wax
- 7 High tap position (153mm from the bench) allows larger sized containers to be used
- 8 Integral tap filter screen (0.5mm mesh) prevents coarse particles from blocking the delivery tap
- 9 Stainless Steel inner tank provides good thermal conductivity and improved temperature control
- 10 Insulated paraffin tank prevents heat loss from the tank and ensures that outer surfaces of the tank are safe to touch
- 11 Incorporated miniature circuit breakers for added user safety
- 12 Anti-microbial coating (Ag+) to inhibit growth of bacteria

High Capacity Wax Dispenser

Designed for on-demand delivery of molten wax in larger laboratories

The High Capacity Wax Dispenser has a substantial 15L capacity, designed to satisfy the demands of high workload laboratories that require constant on-demand supply of molten wax. This dispenser has two separate 7.5L tanks which can be operated independently of one another to provide greater flexibility. Having two separate tanks also encourages LEAN laboratory workflows and improves efficiency where, for example, one tank can be ready for wax dispensing whilst the other is in the process of melting pelletized wax. This results in no downtime.

Like the Slimline Wax Dispenser, the High Capacity instrument has digital temperature control and an ultra-fast heating system for the rapid melting of pelletized wax. Delivery of the molten wax is via two separate high-positioned non-drip lever taps, with both being the same as that incorporated onto the Slimline Dispenser.

Dimensions: 420.5mm x 362mm x 435.5mm (D x W x H)

KEY BENEFITS

All the benefits of the Slimline Wax Dispenser plus:

- 1 15 litre capacity holds up to 12kg of pelletised wax for high workload laboratories
- 2 Two separate 7.5 litre tanks with independent heating and on/off controls improves efficiency
- 3 Encourages LEAN laboratory workflows

Item Code	Description	Quantity
JAU-0200-00A	High Capacity Wax Dispenser 110-230V A.C. 50-60Hz	1



Two separate
7.5 Litre tanks
can be operated
independently

HOLDS UP
TO 12KG OF
PELLETISED
WAX

Digital Tissue Section Bath

Like the LED Tissue Section Bath (page 11), the digital model incorporates an innovative digital control that accurately maintains water temperature and allows tissue sections to be efficiently flattened prior to being picked up with a microscope slide. It also incorporates an extra deep 90mm bowl to allow slides to be fully dipped at an angle without touching the bottom.

A generous space surrounds the bowl to allow users to rest their hands when floating sections.

Enhanced safety features include recessed controls, an over-temperature thermal cut out and miniature circuit breakers.

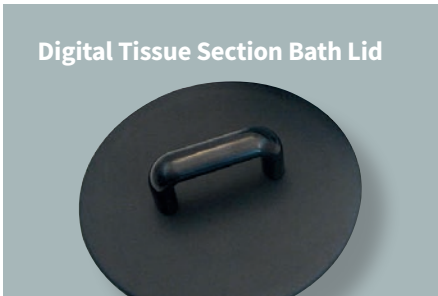
Dimensions: 370mm x 295mm x 135mm (D x W x H). Bowl Depth: 90mm

Item Code	Description	Quantity
JAW-0300-00A	Digital Tissue Section Bath (110-230V A.C. 50-60Hz)	1
JAW-0300-00L	Digital Tissue Section Bath Lid (Round)	1



KEY BENEFITS

- 1 Deep bowl with large diameter allows slides to be used at any angle to pick up section
- 2 Convenient slide drying area at rear of the bath
- 3 Small footprint ensures minimal work bench space is taken up
- 4 Ultra-fast heating system reduces waiting time before instrument is ready for use
- 5 Enhanced safety features
- 6 Anti-bacterial powder coating finish inhibiting growth of bacteria and viruses
- 7 Digital temperature control accurate to + or - 0.5°C at 45°C
- 8 Incorporated miniature circuit breakers eliminating the need for replacement fuses
- 9 Optional easy to use drop-on lid improves heating efficiency and control, whilst protecting water from contamination



Digital Tissue Section Bath Lid

FOR INFORMATION
ON SLIDE DRYING
WORKSTATION
SEE PAGE 16

Digital Tissue Section Bath with Slide Drying Workstation

Item Code	Description	Quantity
JAW-9900-00B	Digital Tissue Section Bath with Slide Drying Workstation	1



LED Digital Tissue Section Bath

The LED Digital Tissue Section Bath is designed specifically to enhance visualisation of tissue sections and to reduce the risk associated with floating tissue debris.

An innovative LED light array sits inside the bath, working in collaboration with a high-contrast background to provide optimal specimen viewing conditions. The LED light array utilises separate white and blue LED lights to illuminate the water surface.

RECOMMENDED
BY CELLPATH

Both LED lights are dimmer controlled, allowing the user to vary the intensity of the back lighting to their preference for section viewing. The LED backlighting also aids detection of any tissue floaters, which may be left on the water surface after cleaning section debris.

Digital temperature control accurately maintains water at a set temperature, allowing tissue sections to be efficiently flattened prior to being picked up with a microscope slide. The bath has generous space for a user to rest their hands when floating sections and an extra deep 90mm tapered bowl which allows slides to be dipped at any angle, without touching the bottom of the bowl.

Stability is provided by four rubber feet and controls have been recessed to provide the user with an added measure of safety. Enhanced safety features include recessed controls, an over-temperature thermal cut out and miniature circuit breakers.

Dimensions: 370mm x 295mm x 135mm (D x W x H). **Bowl Depth:** 90mm

Item Code	Description	Quantity
JAW-0200-00A	LED Digital Tissue Section Bath (110-230V A.C. 50-60Hz)	1
JAW-0200-00L	LED Digital Tissue Section Bath Lid (Round)	1
JBA-SA02044-LED-00A	LED Lighting Rig for LED Digital Tissue Section Bath (Spare Part)	1



LED light with
dimmer control

KEY BENEFITS

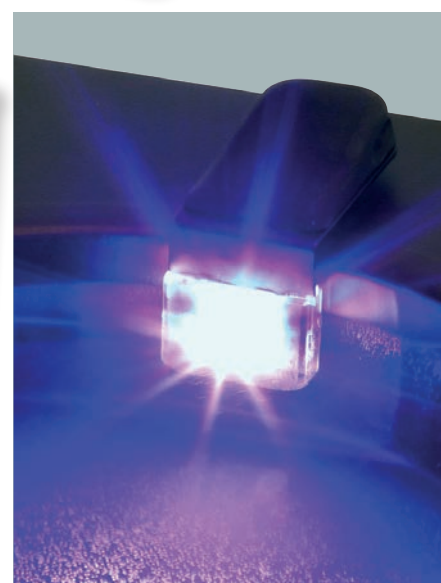
All the benefits of the Digital Section Bath plus:

- 1 Selectable blue and white LED back lighting with dimmer control improves section visualisation
- 2 Easily removable/replaceable LED light array

LED Digital Tissue Section Bath Lid



LED Digital Tissue Section Bath Lighting Rig
(included with JAW-0200-00A)



See video on
our website

LED Digital Tissue Section Bath (Square) – 4 Colour



The LED Digital Tissue Section Bath (Square) is a smaller waterbath that sits effortlessly on the bench top next to the microtome. It incorporates a four colour LED that enhances visualisation of tissue sections and reduces the risk associated with floating tissue debris.

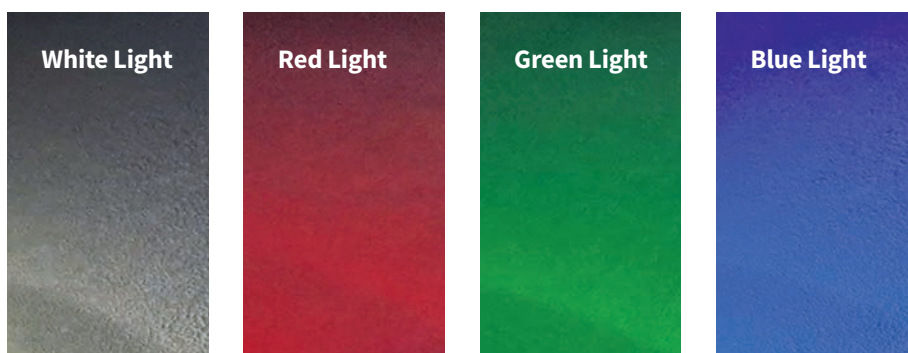
Like its LED Digital Tissue Section Bath counterpart, the square version also incorporates an innovative LED light array that sits inside the bath, working in collaboration with a high-contrast background to provide optimal specimen viewing conditions.

The LED light array utilises separate white, red, green and blue LED lights to illuminate the water surface.



KEY BENEFITS

- 1 Selectable white, red, green and blue LED back lighting with dimmer control improves section visualisation
- 2 Easily removable/replaceable LED light array without the use of specialist tools
- 3 Small footprint takes up minimal bench space at the microtome
- 4 Ultra-fast heating system reduces waiting time before the instrument is ready to be used
- 5 Enhanced safety features; recessed controls, an over-temperature thermal cut out and miniature circuit breaker
- 6 Anti-microbial finish to inhibit bacteria and virus growth
- 7 Digital temperature control accurate to + or – 0.5°C at 45°C
- 8 Incorporated miniature circuit breakers eliminating the need for replacement fuses
- 9 Optional easy to use drop-on lid improves heating efficiency and control, whilst protecting water from contamination



All four LED lights are dimmer controlled, allowing the user to vary the intensity of the back lighting to optimise tissue section viewing. The intense lighting also aids the user to detect any potential tissue floaters, which may be left on the water surface.

Digital temperature control accurately maintains water at a set temperature, allowing tissue sections to be efficiently flattened prior to being picked up with a microscope slide.

Stability is provided by four rubber feet and controls have been recessed to provide the user with an added measure of safety. Enhanced safety features include recessed controls, an over-temperature thermal cut out and miniature circuit breaker.

The small footprint instrument designed to take up minimum space at the microtome, offering both reliability and ease of use to end users.

Item Code	Description	Quantity
JAW-0400-00A	Digital Tissue Section Bath (Square) - 4 Colour LED, 110-230v	1
JAW-0400-00L	Tissue Section Bath (Square), Digital - Lid	1

Tissue Section Bath (Round)

CellPath's Analogue Tissue Section Bath has a classic circular design with a generous inclined rim for resting hands whilst working.

Incorporating a 60mm deep bowl, slides can be fully dipped at an angle without touching the bottom. This bowl is coated with a matt black powder coating to provide a visual contrast for paraffin tissue sections.

As with all our tissue section baths, an optional easy to use drop-on lid is available to cover the bowl when not in use. This improves temperature control of the bath, reduces evaporation and prevents dust or pollen from settling on the surface of the water.



Dimensions: 335mm x 120mm (Dia x H)

KEY BENEFITS

- 1 Small footprint ensures minimal bench space is taken
- 2 Deep bowl allows slides to be used at any angle to pick up section
- 3 Ultra-fast heating system reduces waiting time before instrument is ready for use
- 4 Variable analogue temperature control to meet user needs
- 5 Optional easy to use drop-on lid improves heating efficiency and control, whilst protecting water from contamination
- 6 Incorporated miniature circuit breakers for added safety
- 7 Anti-bacterial powder coating finish inhibiting growth of bacteria and viruses

Item Code	Description	Quantity
JAW-0100-00I	Tissue Section Bath (110-230V A.C. 50-60Hz)	1
JAW-0100-00AL	Tissue Section Bath Lid (Round)	1



Slide Drying Workstation

With laboratories increasingly struggling with space around the microtome for their required equipment, CellPath has developed a unique-to-market retrofittable Slide Drying Workstation that fits snugly to either our Digital Tissue Section Bath or LED Digital Tissue Section Bath. The Slide Drying Workstation can also be used as a standalone item, or with our other available water baths, albeit without such a good fit.

The workstation is comprised of two areas; a sloped slide drying area which has capacity for 12 slides with temperature control accurate to plus or minus 1°C and a mini-hotplate (used to remove stubborn wrinkles from tissue sections) which is set to 65°C plus or minus 3°C.

Dimensions: 160mm x 290mm x 182mm (D x W x H)

Item Code	Description	Quantity
JAW-9900-00A	Slide Drying Workstation (110-230V A.C. 50-60Hz)	1



KEY BENEFITS

- 1 Ultra-fast heating system reduces waiting time before instrument can be used
- 2 Novel, sloped tile design hotplate improves drying efficiency through better drainage of excess water from slides and enables pick up of slides without touching the hotplate
- 3 Small footprint takes minimal bench space
- 4 Modular design optimised for use with CellPath's Digital & LED Section Baths, saving additional bench space
- 5 Digital temperature control functionality with memory function for desired start up temperature
- 6 Incorporated de-wrinkling mini hotplate set to 65°C +/- 3°C
- 7 Anti-microbial powder coating

LED Digital Tissue Section Bath with Slide Drying Workstation

Item Code	Description	Quantity
JAW-9900-00C	LED Digital Tissue Section Bath with Slide Drying Workstation	1



Slimline Slide Drying Hotplate

A small footprint instrument to remove stubborn wrinkles from tissue sections

The Slimline Slide Drying Hotplate is designed to efficiently dry paraffin tissue sections through the use of a digital temperature control that provides accurate control of the drying temperature. An ultra-fast heating system ensures a rapid warm up time prior to use.

Microscope slides are supported on four moveable rails which allow heated air to pass underneath the slides to accelerate drying, and also allows users to slope slides at a 10° angle to encourage water drain off. The rails can be removed from the instrument so that slides can be placed directly onto the heated surface when required.

The body of the Slimline Hotplate is coated with an anti-microbial paint finish which inhibits the growth of bacteria and viruses. The actual hotplate is coated with a matt black powder to provide a visual contrast against paraffin tissue sections.

An optional stainless steel lid is available which can be used with slides in position on the hotplate. Use of the lid improves temperature control, further reduces drying times and improves overall heating efficiency.

Dimensions: 183mm x 450mm x 85.5mm (D x W x H)

Item Code	Description	Quantity
JAY-0100-00A	Slimline Slide Drying Hotplate (110-230V A.C. 50-60Hz)	1
JAY-0100-00AL	Slimline Slide Drying Hotplate Lid	1

KEY BENEFITS

- 1 Ultra-fast heating system for rapid warm up
- 2 Variable temperature control gives the ability to set temperature to exact specimen requirements
- 3 Moveable slide support rails to cater for different slide sizes

Removable rails support slides at a 10° angle to aid drainage

RECOMMENDED BY CELLPATH

- 4 Anti-bacterial paint finish to inhibit bacteria and virus growth
- 5 Memory function for desired temperature at start-up
- 6 Mini circuit breakers incorporated into the instrument eliminating the need for replacement fuses
- 7 Optional stainless steel lid to improve temperature control and reduce drying times



Large Slide Drying Hotplate

The Large Slide Drying Hotplate differs from the Slimline version through its width. Designed for use in high workload laboratories with a large capacity work surface for paraffin tissue section drying, the Large Drying Hotplate incorporates six removable rails.

Dimensions: 282mm x 450mm x 85.5mm (D x W x H)

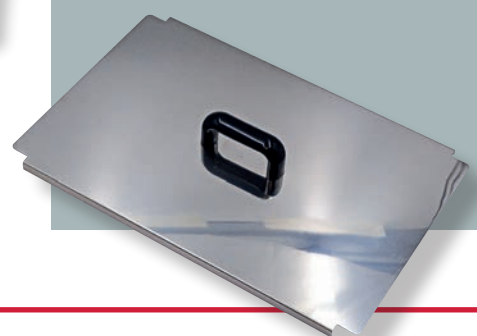
Item Code	Description	Quantity
JAY-0300-00A	Large Slide Drying Hotplate (110-230V A.C. 50-60Hz)	1
JAY-0300-00L	Large Slide Drying Hotplate Lid	1



KEY BENEFITS

- 1 Ultra-fast heating system for rapid warm up
- 2 Variable temperature control gives the ability to set temperature to exact specimen requirements
- 3 Moveable slide support rails to cater for different slide sizes
- 4 Anti-bacterial paint finish to inhibit bacteria and virus growth
- 5 Memory function for desired temperature at start-up
- 6 Mini circuit breakers incorporated into the instrument eliminating the need for replacement fuses
- 7 Optional stainless steel lid to improve temperature control and reduce drying times

Slide Drying Hotplate Lid



Mini Hotplate

The Mini Hotplate has a very small footprint, making it ideal for use at the microtome. It is predominantly used to remove stubborn wrinkles from tissue sections and re-orientating embedded tissue. It may also be used in microbiology for heat fixing bacterial smears.

The hotplate features a matt black heated surface to provide a visual contrast for paraffin tissue sections, and reaches temperatures of 75°C. The body of the Mini Hotplate is coated with an anti-microbial powder coat finish which inhibits growth of bacteria and viruses.

Dimensions: 145mm x 145mm x 65mm (D x W x H)

Item Code	Description	Quantity
JAY-0200-00A	Mini Hotplate (110-230V A.C. 50-60Hz)	1



KEY BENEFITS

- 1 Ultra-fast heating system
- 2 Small footprint
- 3 Matt black hotplate surface providing a contrast for section visualisation
- 4 Anti-microbial powder coat finish

Mini Section Dryer

The Mini Section Dryer is an innovative small footprint section dryer, designed for use at the microtome for improved LEAN workflow. Air at a digitally controlled temperature is blown through the base of the instrument for rapid and efficient section drying without the risk of overheating the specimen. Through this process, drying times can be reduced by approximately 75% when compared to conventional ovens.

A large chamber has space for up to 6 slide racks at 30 slide capacity, which can be inspected at any time through a transparent lid. Innovative resistance hinges on the lid allows users to easily position it at an angle. This allows both hands to be used when placing or removing items from the dryer.

The optional LEAN Timer system and identifier rack ensures that each slide rack has an exact drying time and provides both an audible and visual indication to users when a slide rack has fully completed drying.

Dimensions: 323mm x 267mm x 175mm (D x W x H)

Item Code	Description	Quantity
JAX-0300-00A	Mini Section Dryer (230V A.C. 50-60Hz 400 Watts)	1
JAX-0300-00B	Mini Section Dryer 4 Rack LEAN Timer Unit	1
JAX-0300-00C	Mini Section Dryer 4 Slide Rack Holder/Identifier	1
JAX-0300-00D	Mini Section Dryer Dako Omnis Rack Holder (Cap. 9 Racks)	1



Shown with optional Timer Units

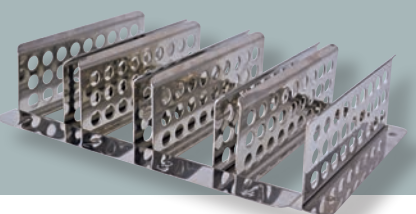
KEY BENEFITS

- 1 Fan assisted heating reduces section drying time to approximately 10 minutes, compared to 35-40 minutes when using conventional ovens
- 2 Optional LEAN Timer System and LEAN identifier rack ensures that each rack has the exact drying time
- 3 Small footprint allows the instrument to be positioned close to the microtome to speed up workflow in the laboratory
- 4 Ultra-fast heating system for rapid warm up
- 5 Digital temperature control guarantees heat accuracy within the chamber
- 6 Anti-microbial finish (Silver Ion)
- 7 Mini circuit breakers incorporated into the instrument eliminating the need for replacement fuses

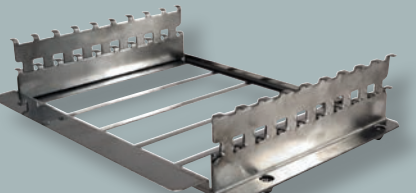
Mini Section Dryer
4 Rack LEAN Timer Unit



Mini Section Dryer
4 Slide Rack Holder/Identifier



Mini Section Dryer
Dako Omnis Rack Holder



High Capacity Section Dryer

The High Capacity Section Dryer differs from the Mini Section Dryer mainly through its size. Designed to give maximum drying capacity for high workload laboratories, the High Capacity Section Dryer has space for up to 13 slide racks at 30 slide capacity.

Although larger than the Mini Section Dryer, the High Capacity instrument can also be located in close proximity to the microtome.

Dimensions: 465mm x 320mm x 335mm (D x W x H)

Item Code	Description	Quantity
JAX-0400-00A	High Capacity Section Dryer (230V AC 50-60Hz 1000 Watts)	1
JAX-0400-00D	High Capacity Section Dryer 8 Slide Rack Holder	1
JAX-0400-00B	High Capacity Section Dryer 4 Rack Timer Unit (1 to 4)	1
JAX-0400-00C	High Capacity Section Dryer 4 Rack Timer Unit (5 to 8)	1



Shown with optional Timer Units

KEY BENEFITS

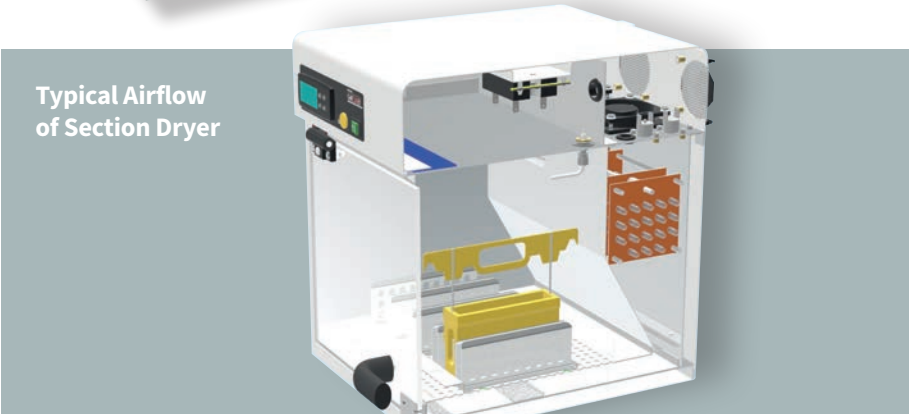
- 1 Fan assisted heating reduces section drying time to approximately 10 minutes, compared to 35-40 minutes when using conventional ovens
- 2 Optional LEAN Timer System and LEAN identifier rack ensures that each rack has the exact drying time
- 3 Small footprint allows the instrument to be positioned close to the microtome to speed up workflow in the laboratory
- 4 Ultra-fast heating system for rapid warm up
- 5 Digital temperature control guarantees heat accuracy within the chamber
- 6 Anti-microbial finish (Silver Ion)
- 7 Mini circuit breakers incorporated into the instrument eliminating the need for replacement fuses



High Capacity Section Dryer 8 Slide Rack Holder



High Capacity Section Dryer Rack Timer Unit



Typical Airflow of Section Dryer

Advanced Section Dryer

CellPath's Advanced Section Dryers have been designed to provide maximum drying area whilst taking up a minimal amount of bench space. The instruments have 'wipe clean' touch pad controls which provide accurate control of the drying temperature and an ultra-fast heating system for rapid warm-up. A wire shelf is supplied, which increases drying capacity and allows efficient drying of tissue sections.

The Advanced Section Dryers are specifically developed for the drying needs of Histopathology laboratories, with a maximum temperature of 70°C to ensure specimen safety. Innovative programmable heating functions can control both heating temperature and heating times.

The body of the instruments are coated with an anti-microbial finish which inhibits the growth of bacteria and viruses.

15 Litre — Dimensions: 440mm x 350mm x 520mm (D x W x H)

32 Litre — Dimensions: 520mm x 400mm x 600mm (D x W x H)

KEY BENEFITS

- 1 Maximum heating temperature restricted to 70°C for specimen safety
- 2 Ultra-fast heating system for rapid warm up
- 3 Energy saving – programmable heating times and temperatures
- 4 Digital temperature control gives users the ability to set exact temperatures
- 5 Fan assisted, ensuring an even distribution of heat and reduced drying times
- 6 Anti-microbial finish (Silver Ion)

Item Code	Description	Quantity
JAX-0100-00A	15 Litre Advanced Section Dryer (230V AC 50-60Hz UK Plug)	1
JAX-0200-00A	32 Litre Advanced Section Dryer (230V AC 50-60Hz UK Plug)	1
JAX-0115-00P	Perforated SS Shelf for use with Advanced Section Dryer (15 litre)	1
JAX-0115-00W	Wire Shelf for use with Advanced Section Dryer (15 litre)	1
JAX-0215-00P	Perforated SS Shelf for use with Advanced Section Dryer (32 litre)	1
JAX-0215-00W	Wire Shelf for use with Advanced Section Dryer (32 litre)	1



IceBerg Coldplate

The IceBerg Coldplate is an innovative solution designed to replace ice blocks or chiller sprays traditionally used to cool tissue blocks prior to sectioning. A cold plate pre-cooled to -20°C for between 3 to 5 hours will allow a user to chill blocks for a period of up to 4 hours at room temperature.

The IceBerg comprises a moulded, insulated base and a removable rugged aluminium cold plate. This cold plate is stored in the freezer compartment or cryostat when not in use and is placed in the base whenever blocks need to be cooled prior to microtomy. The large work area enables up to 36 blocks to be cooled at one time. The base collects any condensate formed so the bench and floor stay dry.



STAYS CHILLED
FOR UP TO
4 HOURS

KEY BENEFITS

- 1 Convenient size means the coldplate can sit alongside the microtome
- 2 Removes the need for messy ice tray
- 3 No electrical components or compressors results in low running costs and silent operation
- 4 Remains cold for up to 4 hours

Item Code	Description	Quantity
JRI-0100-00A	IceBerg Coldplate and Base	1
JRI-0200-00A	Spare IceBerg Coldplate	1
JRI-0300-00A	Spare IceBerg Coldplate Base	1



IceBerg+ Coldplate

The IceBerg+ is a standalone coldplate, used to cool down paraffin blocks prior to sectioning. Designed with an extra-large cooling surface, it can accommodate over 60 standard size blocks or 15 Supa Mega sized blocks at one time.

The IceBerg+ Coldplate incorporates an ultra-fast cooling system, reaching an optimal pre-set temperature of -5°C in less than 5 minutes. This makes it one of the quickest on the market, significantly reducing waiting time before the instrument can be used, and ultimately for blocks to be cast.

The temperature can be easily changed if required, with a large capacity compressor allowing the coldplate to maintain a temperature of -5°C, even in warmer laboratories. For specimen safety, the CellTec Iceberg+ cooling surface is limited to -12°C.

The compressor operates quietly, minimising noise levels in the laboratory. Unlike other coldplates, the compressor in the IceBerg+ achieves the set temperature by cyclical operating for approximately 20 seconds before a rest period of approximately two minutes.



Dimensions:

600mm x 402mm x 315mm (D x W x H)

Item Code	Description	Quantity
JRI-0400-00A	IceBerg+ Coldplate (230V)	1

KEY BENEFITS

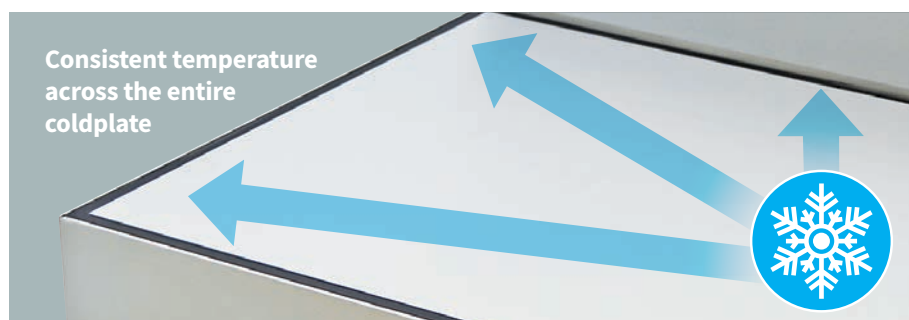
- 1 Ultra-fast cooling system:
< 5 minutes to reach pre-set -5°C temperature
- 2 Large capacity cooling plate:
60 standard size blocks or 15 Supa Mega blocks
- 3 Quick cooling time:
Approximately 15 minutes to cool 60 standard 24 x 24 x 5mm blocks
- 4 Quiet operation
- 5 Digital temperature control $\pm 1^\circ\text{C}$ accuracy (at calibration point)
- 6 Ability to change set temperature to meet customer needs
- 7 Easy to clean
- 8 Anti-microbial finish to inhibit bacteria and virus growth



Ability to change set temperature



Non-slip feet



Consistent temperature across the entire coldplate

FumeBuddy Filtration System

The FumeBuddy Filtration System is a novel portable instrument designed to remove hazardous vapours from a localised working area. Specifically developed for use in Histopathology laboratories, the FumeBuddy filter cartridge removes formaldehyde as well as solvent vapours such as xylene and iso-propyl alcohol, whilst the BactiGuard™ pre-filter eliminates most microbes and viruses.

It is fitted with a powerful variable speed fan which draws contaminated air through a sealed filter cartridge unit. The filter cartridge contains activated carbon filters to target and neutralise formaldehyde and solvent vapours. Clean air is released via a vent at the rear of the instrument.

The FumeBuddy is compact and ideal for use in specimen reception and storage areas. It is also recommended for use in areas where coverslipping or staining procedures are being carried out, and for removing vapours from coverslipped slides which have been left to air dry. The instrument is highly portable and suitable for use in areas where a chemical spill has occurred.

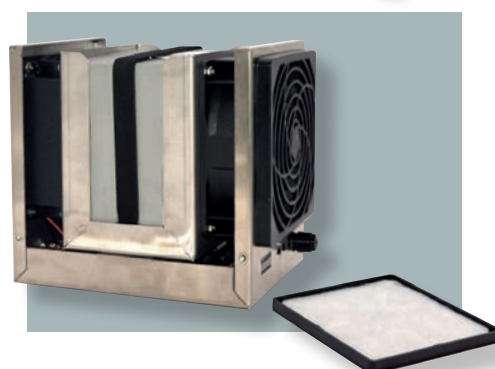
Dimensions: 300mm x 300mm x 300mm (D x W x H)

Item Code	Description	Quantity
XPA-0100-00A	FumeBuddy Filtration System	1
XPA-1100-00A	FumeBuddy Replacement Filter Kit	1
XPA-0100-00B	FumeBuddy Power Supply (UK, EU, US, AUS & NZ Adapters)	1



KEY BENEFITS

- 1 Removes both formaldehyde and solvent fumes
- 2 Eliminates a wide variety of microbes and viruses
- 3 Compact footprint
- 4 Filter alarm alerts user when a replacement filter cartridge is needed
- 5 Portable and easy to position
- 6 Quiet and unobtrusive

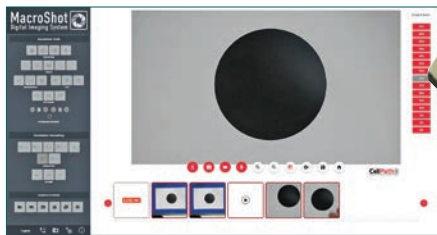


MacroShot Digital Imaging System

MacroShot is a high-definition digital imaging system designed by CellPath, for capture of high-quality images, video, and audio notes.

The MacroShot utilises a full HD camera with a powerful 30X optical magnification and wide view, which enables the camera to be fitted to any existing cut-up bench, grossing hood or used as a stand-alone system in mortuaries. It fully documents the grossing procedure, enabling laboratories to implement better quality assurance control, reduce specimen description time and reduce risk of errors within the lab.

The MacroShot utilises user-friendly icon driven software. A novel auto-calibration procedure, coupled with a comprehensive suite of annotation and measurement tools, ensures accurate, reliable measurements at up to twenty user-defined zoom levels.



User friendly icon driven software.

The MacroShot software can be interfaced with a user's preferred online conference software, to allow remote second opinion telepathology consultations and guided cut-up by pathologists.

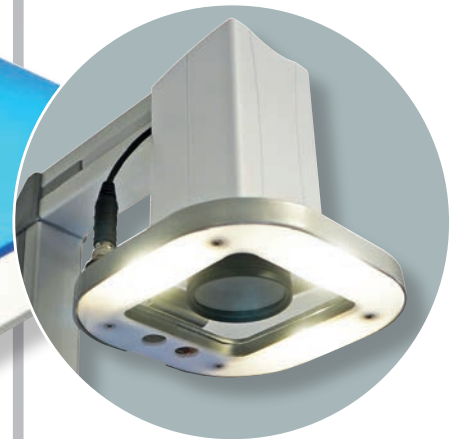
Optional accessories for the MacroShot include: a washable keyboard and mouse, a foot pedal system for hands free capture of images, as well as an LED light ring (with polarizer), which removes glare from wet specimens and ensures constant image quality.

Item Code	Description	Quantity
JAH-0100-00A	MacroShot Grossing Camera	1
JAH-0100-00B	MacroShot Bench Top Stand	1
JAH-0100-00C	MacroShot Foot Pedal	1
JAH-0100-00D	MacroShot Barcoded Scanner	1
JAH-0100-00E	MacroShot Mini PC	1
JAH-0100-00F	MacroShot Touchscreen Monitor	1
JAH-0100-00G	MacroShot Light Ring Including PSU	1
JAH-0100-00H	MacroShot Light Ring PSU Only (UK, EU, US, AUS & NZ Adapters)	1
JAH-0100-00I	MacroShot Washable Sealed Keyboard - Black	1
JAH-0100-00J	MacroShot Washable Mouse	1
JAH-0100-00K	MacroShot Remote Desktop Measurement / Annotation Licence (5)	1

COMING
SOON

KEY FEATURES

- High Quality HD Sony camera optics
- 30x optical magnification (zoom)
- 2.0 megapixel images
- Zoom levels user definable (up to max 20 zoom levels)
- Auto calibration feature
- Single push white balance
- Annotation and calibration features included in software (not an optional extra)



- Video (with sound)
- Digital dictation/voice notes
- Teleconferencing for remote consultations – second opinion/ guided cut-up by pathologist
- Optional table-top stand with blue cut up board for contrast
- Optional LED light ring with dimmer control and polarizer

MacroShot
Digital Imaging System



Notes

[illegible]

Notes

The background of the page features a decorative design. At the top, there are three overlapping pink hexagons. The leftmost hexagon is light pink, the middle one is a slightly darker shade of pink, and the rightmost one is the darkest shade of pink. Below these hexagons, the page is filled with horizontal lines. The first 10 lines are solid green, and the remaining 20 lines are dashed green.

ON YOUR TEAM



CellPath Ltd, 80 Mochdre Enterprise Park, Newtown, Powys, SY16 4LE, UK

T: +44 (0)1686 611333 | E: sales@cellpath.com | cellpath.com

