

# Slidebel Duo

## Automatic Microscope Slide Label Printer and Applicator

EFFICIENT | PRECISE | RELIABLE





## Slidebel Duo Automatic Microscope Slide Label Printer and Applicator

The Slidebel Duo Microscope Slide Printer can accommodate every kind of standard microscope slide, whether it has 90° or clipped corners, polished or cut edges.

Slidebel Duo prints directly onto automatically applied chemical resistant labels, an established and widely adopted methodology in Immunohistochemistry and brings with it two key benefits for the laboratory. Through printing directly onto these chemical resistant labels rather than directly onto the harsher and less-forgiving surface of the microscope slide, the film print head within the Slidebel Duo will last longer and reduce potential downtime within the laboratory. It also provides a superior print quality under any condition, achieving up to 300 dpi resolution and resulting in high contrast printing with sharp detail.

The Slidebel Duo improves lab efficiency through the ability to set pre-defined protocol functions depending on the specimen type. For example, a protocol could be set to print five slides, two of which could be standard and three adhesive, with each slide printed/labelled with specific information.

### KEY BENEFITS

- 1 Scans first time, every time
- 2 Quick: 18 slides can be printed/labelled per minute
- 3 Small footprint (340mm x 140mm)
- 4 Compatible with all routine slides
- 5 Easy slide loading
- 6 Eliminates problem of sticky slides



**Specifications**

|                        |   |
|------------------------|---|
| Item Code:             | JAG-1000-00B  |
| Dimensions:            | 340mm x 140mm x 200mm (D x W x H)   |
| Weight:                | 3.25kg  |
| Included with Package: | Slidebel Duo printer base, Slidebel Duo applicator, slide cartridge, slide collector, front cover, consumable package, cleaning pen, power supply and USB cable |

Slides can be loaded using one of the two purpose built and easy-to-use 50 slide capacity cartridges, with the throughput of the printer being approximately 18 slides per minute. This makes the Slidebel Duo one of the fastest microscope slide label printers/applicators available.

Slidebel Duo can be used as a standalone on-demand microscope slide label printer or together with a custom application or connected to the LIMS. The highly flexible printer provides a broad number of options for connectivity and integration to computer systems:

- Native Windows drivers
- NiceLabel/BarTender drivers
- Direct programming languages, such as EPL/ZPL

## Slidebel Duo Product Features

**Printing**

|                           |                                      |
|---------------------------|--------------------------------------|
| Printing Technology:      | Thermal Transfer                     |
| Printing Media:           | Chemlabels chemical resistant label  |
| Ink Type:                 | Chemlabels chemical resistant ribbon |
| Printing Resolution:      | Up to 300 dpi                        |
| Printing/Labelling Speed: | 18 slides per minute                 |
| Printing Capacity:        | 3,400 slides per label roll          |

**Slide Processing**

|                          |                                   |
|--------------------------|-----------------------------------|
| Slide Type:              | All standard types, ISO 8037      |
| Loading Mode:            | Automatic cassette loading/manual |
| Slide Cassette Capacity: | 2 x 50 slides                     |
| Slide Output Delivery:   | Desktop slider/output tray        |

**Communication Interface**

|                     |   |
|---------------------|---|
| Data Interface:     | USB/Ethernet                                      |
| LIS Interface Mode: | Windows® drivers raw mode                         |
| Labelling Software: | BarTender/Nicelabel compatible                    |
| Compatibility:      | Compatible with all operative systems and devices |



The Slidebel Duo touchscreen display tablet can be used to print slides and to manage printing layouts.





# Consumable Package

Labels, ribbon and license card

Chemlabels are designed to withstand extreme conditions and all laboratory chemicals, such as xylene, ethanol, acetone and acid/basic solutions. Furthermore, they do not absorb color from the staining solutions used in histology and cytology. The labels are permanently applied onto the slides for safe handling and long-term archive storage.



| Specifications       |   |
|----------------------|---|
| Item Code:           | JAG-2000-00A  |
| Label Dimensions:    | 22mm x 18mm. 3,400 slide labels per label roll  |
| Included in Package: | Chemlabels labels roll, Chemlabels ribbon roll, Labels paper core, Ribbon paper core and License card |

## KEY BENEFITS

- 1 Extreme chemical resistance
- 2 High heat resistance [150°C]
- 3 Scratch resistance
- 4 Long-term archiving

# Slide Cartridge

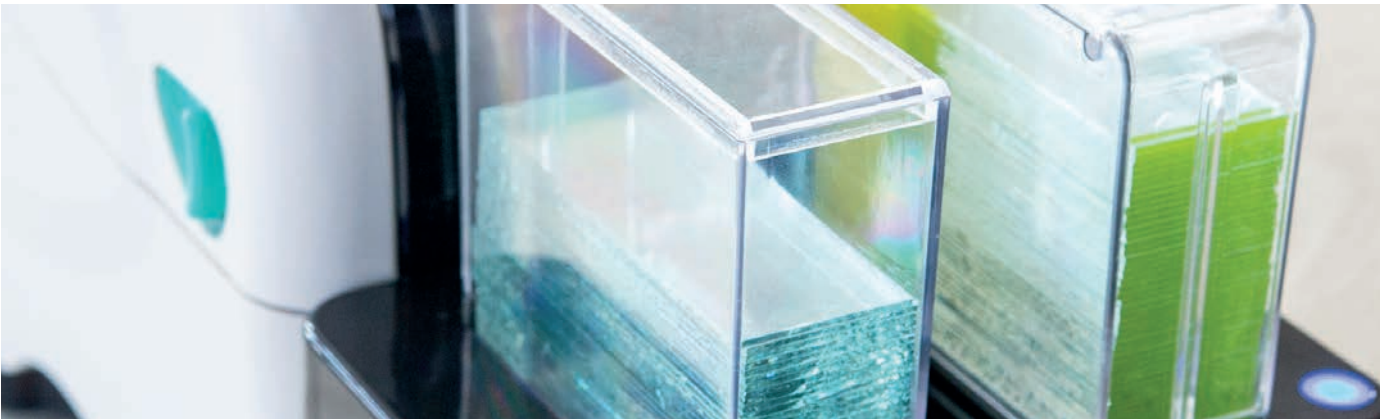
Magnetic, swappable slide cartridge



## KEY BENEFITS

- 1 Simple slide loading, directly from the packaging
- 2 Large filling capacity: 50 slides
- 3 Easy-to-use magnetic retention

| Item Code    | Description                  | Quantity |
|--------------|------------------------------|----------|
| JAG-2000-00B | Slidebel Duo Slide Cartridge | 1        |



## Slide Collector

Magnetic, swappable slide collector and protective wrapping cover to avoid potential scratches and marks



| Item Code    | Description                                 | Quantity |
|--------------|---|----------|
| JAG-2000-00C | Slidebel Duo Slide Collector                | 1        |
| JAG-2000-00D | Slidebel Duo Slide Collector Wrapping Cover | 1        |

### KEY BENEFITS

- 1 Collects up to 35 slides
- 2 Easy-to-use magnetic retention

## Front Cover

Removable front cover



| Item Code    | Description              | Quantity |
|--------------|--------------------------|----------|
| JAG-2000-00E | Slidebel Duo Front Cover | 1        |

### KEY BENEFITS

- 1 Protects printer from dust and glass particles
- 2 Snap-fit retention
- 3 Easy-to-use magnetic retention

## Cleaning Pen

Thermal printhead cleaning pen, recommended to be used every 3 months



| Item Code    | Description               | Quantity |
|--------------|---------------------------|----------|
| JAG-2000-00F | Slidebel Duo Cleaning Pen | 1        |

### KEY BENEFITS

- 1 Keeps the thermal head clean
- 2 Improves thermal head life
- 3 Simple and fast to use



## Slidebel Duo Tools

### Label layout editor and printing tool

Slidebel Duo Tools is the Microsoft® Windows® application which makes it possible to print microscope slides and to customise the printing layout. It can be installed on desktop computers.

**Integration and connectivity support** - GordiamKey support team will help with:

- Integration with third-party systems
- Connectivity to staining platforms
- Integration with LIS systems

### KEY BENEFITS

- 1 Print/label slides on demand
- 2 Preview slide before printing
- 3 Customise the printer layout
- 4 Customise printing input fields, variables and functions
- 5 Control the printer's settings

## Display Tablet

### Slidebel Duo Tools compatible 7inch touchscreen display

The Slidebel Duo touchscreen display tablet can be used to print/label slides and to manage printing layouts. Thanks to its compact size, it can be placed on the desk or safely attached to the desktop arm to save space on the workbench.

### KEY BENEFITS

- 1 Pre-loaded Slidebel Duo Tools application
- 2 Print slides directly at your fingertips
- 3 Choose among several printing layouts
- 4 Automate slide printing/labelling
- 5 Use together with keyboard or scanner

#### Specifications

|                      |  |
|----------------------|--|
| Item Code:           | JAG-3000-00A   |
| Dimensions:          | 200mm x 110mm x 50mm   |
| Included in Package: | Display tablet and power supply  |
| Item Code:           | JAG-3000-00B   |
| Included in Package: | Display table, power supply, desktop arm, barcode scanner and keyboard |





**The Slidebel Duo touchscreen display tablet can be used to print/label slides and to manage printing layouts**



# Display Desktop Arm

Display tablet desktop arm

The display tablet desktop arm can be attached to any workbench through its powerful clamp. It comes with pre-mounted backing plate to securely attach the display tablet. It can be delivered with pre-mounted display tablet and code reader.

| Item Code    | Description                      | Quantity |
|--------------|----------------------------------|----------|
| JAG-3000-00C | Slidebel Duo Display Desktop Arm | 1        |



## KEY BENEFITS

- 1 Save space on the workbench
- 2 Adjust into any position

# Display Barcode Scanner

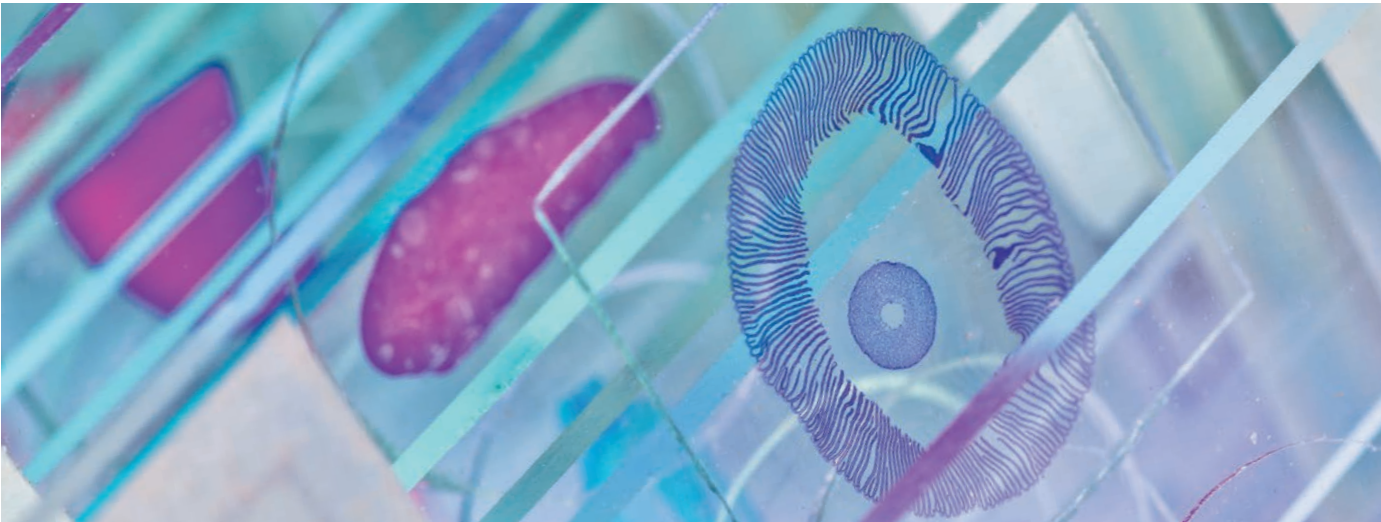
1D and 2D automatic code reader



| Specifications    |                    |
|-------------------|--------------------|
| Item Code:        | JAG-3000-00D       |
| Label Dimensions: | 49mm x 43mm x 22mm |

## KEY BENEFITS

- 1 Interface type: USB
- 2 Supports any standard barcode and 2D code (PDF417, Datamatrix, QR)





## Display Keyboard

### Compact waterproof keyboard

The silicone coated keyboard features an antimicrobial surface which prevents the growth of mold, spores and fungi, enhancing sterility. It is 100% waterproof and complies with the NEMA 4X and IP68 rating.



#### Specifications

|                   |                      |
|-------------------|----------------------|
| Item Code:        | JAG-3000-00E         |
| Key Layout:       | 87 Keys              |
| Dimensions:       | 135mm x 272mm x 12mm |
| USB Cable Length: | 1800mm               |

#### KEY BENEFITS

- 1 Waterproof, cleanable
- 2 Compact and ergonomic
- 3 Lightweight

## Print Server

### Printer server for network connectivity

The print server allows the Slidebel Duo to connect over a network. It comes with pre-installed printer drivers and it is fast and easy to configure.



#### KEY BENEFITS

- 1 Connects the printer to the network
- 2 Fast and easy configuration
- 3 Compact and lightweight

#### Specifications

|             |                    |
|-------------|--------------------|
| Item Code:  | JAG-3000-00F       |
| Dimensions: | 60mm x 71mm x 27mm |
| Weight:     | 59g                |

# Power Supply

Slidebel power adapter



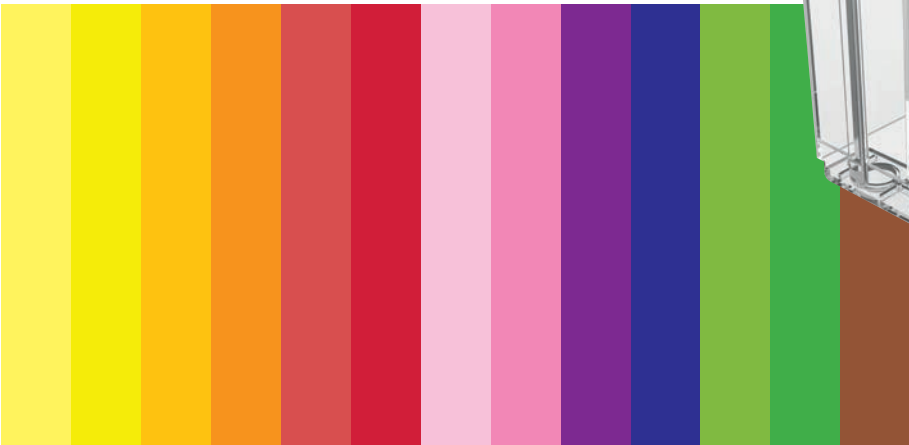
| Specifications |                     |
|----------------|---------------------|
| Item Code:     | JAG-3000-00G        |
| Dimensions:    | 110mm x 50mm x 35mm |
| Input Range:   | 100 to 240V AC      |
| Frequency:     | 50 to 60Hz          |
| Output:        | 24V                 |
| Power:         | 60W                 |

## KEY BENEFITS

- 1 Level VI power supply
- 2 All common safety standards such as CE, FCC, UL, TUV, CB, CCC

# Stickers for Cartridge

Coloured stickers for cartridge identification



| Item Code    | Description                    | Quantity |
|--------------|--------------------------------|----------|
| JAG-2000-00G | Slidebel Duo Coloured Stickers | 1        |

## KEY BENEFITS

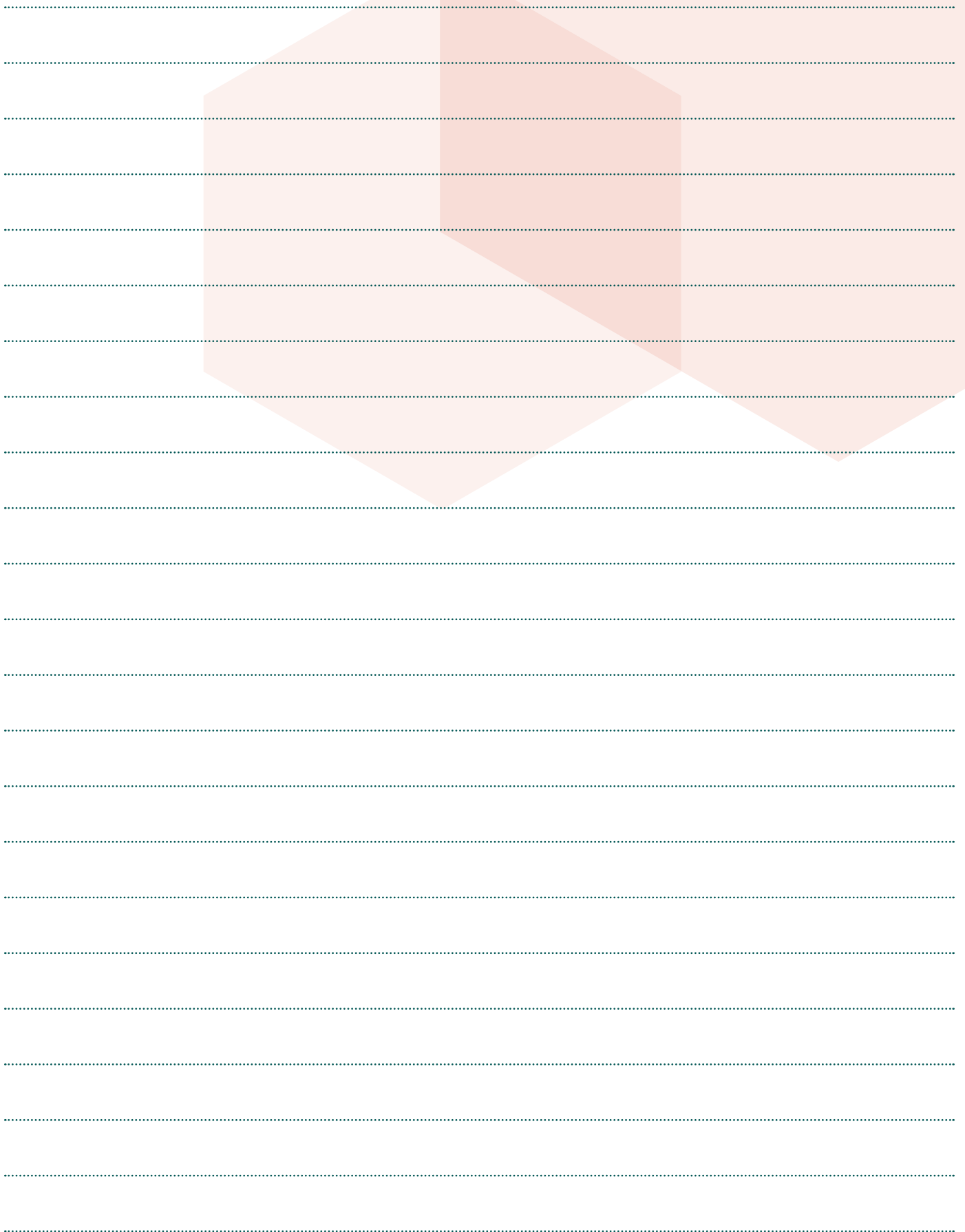
- 1 Identify several cartridges with different slide types
- 2 13 different colours: yellow, fluorescent yellow, orange, dark orange, red, fluorescent red, pink, fluorescent pink, purple, blue, green, fluorescent green, brown
- 3 Other colors on request

**More information**

Contact our Customer Care Team for further information on +44 (0)1686 611333



## Notes



A series of horizontal dotted lines for taking notes, overlaid on a background of overlapping light red hexagons.

