

Formaldemeter htV-m

Please
contact us for
more information
cellpath.com



In recent years, laboratory safety has come to the forefront of issues faced in the Cellular Pathology industry. As a result, it has become essential to accurately monitor levels of formaldehyde gas within the laboratory.

The Formaldemeter htV-M* is a mains or battery powered device that offers the precise 3-parameter monitoring for low levels of formaldehyde vapours, ideal for use at the workstation.

The htV-m can precisely measure formaldehyde concentrations in parts per million (ppm) and mg/m3 over a wide range of temperature and humidity. Fast and easy to use, pressing a single button gives an immediate indication of concentration levels. The Formaldemeter htV-m is reliable and simple to calibrate. The compact size means the htV-m is small enough to be used as a hand held device. The built in memory and real time clock enables the htV-m to log all 3 parameters and corresponding times, allowing improved monitoring and analysis opportunities.

Alternatively the htV-m can be used as a continuous monitor; a PC can automate the sampling and log data at specific times by a direct or wireless connection. This is advantageous as it allows the user more freedom and is a cost effective approach to taking such measurements.

KEY BENEFITS

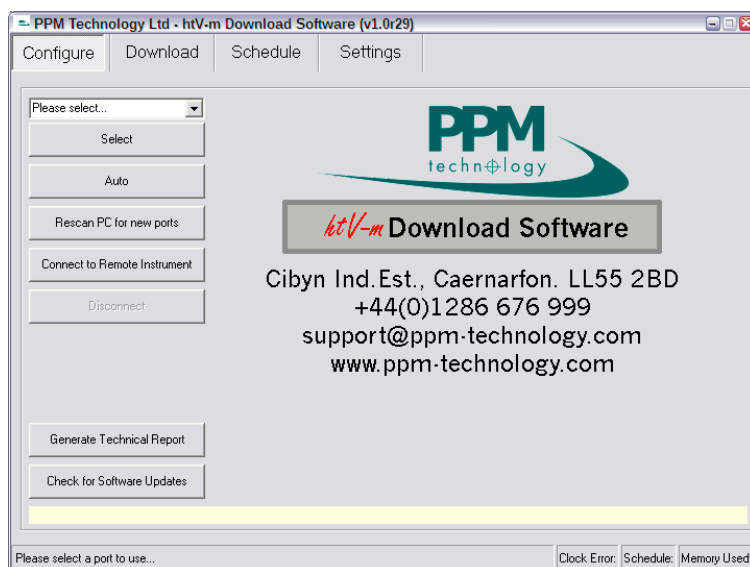
- 1 Capable of up to one month of continuous monitoring
- 2 Built in alarm sounders
- 3 Mains or battery powered
- 4 Can be used manually as a hand-held device or as a continuously monitoring data logger
- 5 Incorporated USB interface allows direct connection to a PC for downloading data

Part No	Description	Qty
XBA-0100-00A	Formaldemeter htV kit & Calibration Standard	1
XBA-0200-00A	Formaldemeter htV kit & Calibration Standard(2000+)	1
XBA-0300-00A	Formaldemeter htV kit & Calibration Standard(6000+)	1
XBA-0400-00A	Formaldemeter htV kit & Calibration Standard(14000+)	1
XBA-0500-00A	Formaldemeter htV WIFI Module Accessory	1

*The Formaldemeter htV-m is manufactured by PPM Technology Ltd. CellPath are acting as their UK distributor.

htV-m Download Software

The htV-m download software allows you to download data from the Formaldemeter htV-m unit quickly and easily. The software features the ability to adjust the sampling schedule to your desired time and frequency settings. Data can be downloaded by USB or WiFi (if fitted) and saved in a variety of formats.



Features



Easy to use,
4-button interface



DC & USB
Connection



Built in
Stand



Optional Extras

WiFi Module:

For downloading data
from remote locations
without the use of cables.

Specifications

Sampling Method: 10ml
snatch-sample of air taken by
internal pump.

Sample Frequency: 2 minutes in
normal IAQ conditions.

Response Time: 60 seconds in 'high
accuracy' mode, approx. 8 seconds
in 'lower accuracy' mode.

Operating Range: 0-40°C, 15-90%
RH

Mechanical: 150 x 80 x 34mm ABS
plastic case. Padded accessory case
313 x 265 x 77mm.

Weight: 300g with 9V PP3 alkaline
battery Total kit weighs 1.2 Kg.

Formaldehyde Sensor

Type: Electrochemical
manufactured by PPM Technology.

Concentration Range: 0-10ppm as
standard (0- 12.3 mg/m³ at 25°C).
Extended range available
on request.

Resolution: 0.01 ppm

Precision: 2%

Accuracy: 94% of all instrument
readings meet the NIOSH criteria
for an acceptable method when
measuring 0.3ppm of formaldehyde
over a relative humidity range of
25-70%. The NIOSH criterion for
acceptability is that all results fall
within ±25% of the true value at the
95% confidence level.

Calibration: By user with supplied
calibration standard or by original
manufacturer.

Kit Contents

Formaldemeter htV-m
Formaldehyde Calibration
Standard USB Cable
Pack of phenol filters (10)
Digital copy of manual
User Quick Guide
Universal 12V power supply
Certificate of calibration and
compliance
htV-m Download Software